



Green Earth   
**FORT VIEW**  
*Live Like a Legend...*



*Shape your  
imagination  
into a beautiful  
LIVING...*

*Live Like  
a LEGEND.*





# Green Earth FORT VIEW

*Live Like a Legend...*

Set amidst lush green space of about 2 acres, overlooking the legendary Golconda Fort, Green Earth Fort View Apartments offers all the modern comforts and conveniences that will allow you and your family to live in style and in a pollution-free environment, away from the hustle bustle of the city and yet minutes away from the heart of the city.

## Highpoints

- Gated community, 60% open space
- Club facilities, Project innovatively designed
- Just 6 km from Mehdiapatnam
- 4 km before APPA junction of ORR
- 20 minutes drive from RGI Airport & IT hubs
- Malls, schools, markets and hospitals are nearby

## Quick Facts

<b>Project:</b>	Green Earth Fort View
<b>Location:</b>	Hydershah Kote, Hyderabad. India
<b>Development Size:</b>	Approx. 2 acres
<b>Development Type:</b>	Residential Apartments
<b>Units:</b>	2 BHK & 3 BHK
<b>Possession:</b>	24-30 months







**GREEN EARTH**  
— INFRATECH —  
shaping the world

### Welcome to **Green Earth Infratech** !

A part of Green Earth, one of the most trusted names in South Indian real estate industry, Green Earth Infratech offers quality properties across Residential, Leisure & Commercial segments.

Synonymous with style & luxury, Green Earth now presents another prestigious project, Green Earth Fort View, a premium gated community of quality apartments.

India is growing at a rapid pace and Hyderabad is emerging as the top most business destination with many world class construction projects taking shape across the city. This has provided us with an excellent opportunity to grow in tandem with Hyderabad's impressive economic growth and contribute towards building a new and green India.

Green Earth has set a new trend in the industry with successful projects like Tenerife, Richfield and Hinsdale in and around Greater Hyderabad.



*Live Like a LEGEND...*





**HMDA**  
APPROVED

## AMENITIES

- ★ Optional Club membership offering swimming pool, health club, banquet hall and facilities for indoor games like table tennis, chess and caroms.
- ★ Centralized water treatment plant for water.
- ★ Multi-channel viewing facility through cable networking.
- ★ Integrated electronic security system.
- ★ Access to a vast expanse of greenery via open walkways and landscaped surroundings.
- ★ All boundaries guarded with solar fencing.
- ★ Modern sewage treatment plant.
- ★ Two lifts with 9 people capacity each of Johnson or equivalent make for each building.
- ★ Three phase electricity for each residential unit.
- ★ HMWS & SB connections will be provided for municipal drinking water and sewerage.
- ★ Centralized power backup generator for lifts and common areas.
- ★ Sumps for supplying 24 hrs running water.
- ★ Rainwater harvesting pits as per government specifications.



# FLOOR PLANS

## BLOCK - 4



## BLOCK - 5



FLAT No.	PLINTH AREA	COMMON AREA	TOTAL AREA	No. OF FLATS
1 & 7 TO 14	956.36	198.64	1155.00	9
2 TO 5	1060.17	210.83	1271.00	4
6	1094.74	230.26	1325.00	1

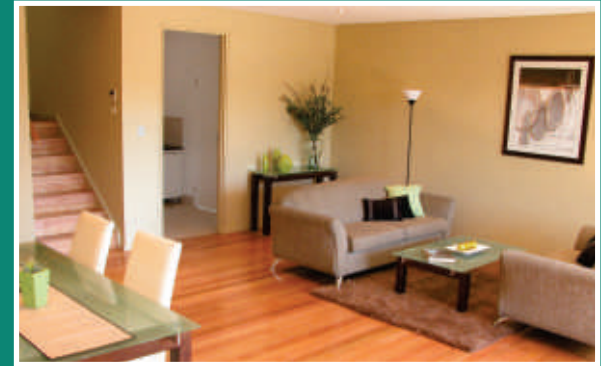


FLAT No.	PLINTH AREA	COMMON AREA	TOTAL AREA	No. OF FLATS
1 & 14	1476.96	298.04	1775.00	2
2 TO 7 & 9	955.03	199.97	1155.00	7
8	1094.81	220.19	1315.00	1
10 TO 13	1058.84	212.16	1271.00	4



# SPECIFICATIONS

<b>STRUCTURE:</b>	RCC columns beam and slab.
<b>WALLS:</b>	All external walls 9" and all internal walls 4.5" thick in bricks.
<b>PLASTERING:</b>	Two coats of sponge finish plastering.
<b>DOORS:</b>	MT wooden frames with flush doors having teak veneer finish.
<b>WINDOWS:</b>	Aluminum frames with aluminum shutters and safety grills.
<b>GENERAL FLOORING:</b>	Vitrified tiles in bedrooms, drawing, dinning, living and kitchen areas.
<b>BALCONY FLOORING:</b>	Ceramic tiles.
<b>TOILETS:</b>	Anti-skid ceramic tiles flooring with glazed tiles on walls upto 7' height, light coloured porcelain fittings and C.P. fittings of standard make.
<b>KITCHEN:</b>	Granite top platform with 2' high ceramic tiles walls cladding & sink with CP fittings.
<b>ELECTRICAL:</b>	Concealed copper wiring for lights, fans and plug points. All switch boards of "MDS Mosaic" or equivalent make. Also, power outlets for air conditioners.
<b>COMMON AREA &amp; STAIR CASE:</b>	Marble flooring.
<b>PAINTING INTERNAL:</b>	Two coats of plastic emulsion paint over primer with smooth finish.
<b>PAINTING EXTERNAL:</b>	Two coats of cement based paints of Ace or equivalent make.
<b>WATER PROOFING:</b>	All toilets and terrace will be water proofed.
<b>INTERCOM:</b>	Intercom facility providing security to all flats.
<b>TELEPHONE:</b>	Telephone points in all bedrooms, drawing and dinning areas.
<b>TV:</b>	TV points in drawing room and master bedroom.
<b>INTERNET:</b>	Cabling for internet provision.





**Model - 1**  
**FLATS**  
 3 BHK  
 Total Area: 1775.00 sft



**Model - 2**  
**FLATS**  
 2 BHK  
 Total Area: 1325.00 sft



**Model - 3**  
**FLATS**  
 2 BHK  
 Total Area: 1271.00 sft



**Model - 4**  
**FLATS**  
 2 BHK  
 Total Area: 1155.00 sft



**HMDA**  
APPROVED

### SCHOOLS

- Glendale Academy - 1 km
- Army School - 1 km
- Delhi Public School - 8 km

### HOSPITALS

- Sun City Hospital - 1 km
- Dental Clinic - 1 km
- Shadan Hospital - 3 km

### UTILITIES

- Super Market - 0.5 km
- Fruit & Vegetable Market - 0.5 km
- Inorbit Mall - 12 km

### KEY PLACES

- RGI Airport - 14 km
- Railway Station - 12 km
- MP Bus Station - 7 km





**Major Distances**

- ➔ 4 km from APPA Junction
- ➔ 6 km from Mehdiapatnam
- ➔ 11 km from Banjara Hills
- ➔ 11 km from Gachibowli
- ➔ 12 km from HITEC City





Green Earth Developers Private Limited was founded in 2006 by Mr. Mohammed Arshad Hussain, an entrepreneur with a keen eye for business. Today the company has evolved into a key player in South India with an impressive portfolio of Residential, Leisure & Commercial Spaces.

Green Earth Infratech is the group's entity for infrastructural business activities. Green Earth Fortview is our first flagship construction project, offering people quality lifestyle apartments in the heart of Hyderabad city.

Green Earth is backed by a team of talented and experienced industry professionals with extensive domain knowledge and most importantly our customer's faith and trust, which is the bottomline of our success. Today, we are proud to be a part of building a new and green India.

## Our Projects





**GREEN EARTH**  
INFRA TECH  
shaping the world

201, Moghul Court, Basheerbagh  
Hyderabad - 500001. India  
T: +91 40 2323 0952/ 53  
F: +91 40 2323 0954

601, Moghul Court, Basheerbagh  
Hyderabad - 500001. India  
T: +91 40 6666 2640/ 41  
F: +91 40 2323 0954

[www.greenearthinfratech.com](http://www.greenearthinfratech.com)

[www.fortviewlife.com](http://www.fortviewlife.com)

Architects:

 **A. A. & ASSOCIATES**  
Architects, Planners & Interior Designers

Structural Engineers:

 **TAMEER**  
Consulting Associates

